



# LaserBand<sup>®</sup> 2



SEE MORE. DO MORE.



Zebra's self-laminating LaserBand 2 laser wristbands feature an enhanced design over traditional laser wristbands that allow the wristbands to lie flat on the wrist to enable quick scanning, while providing superior patient comfort.

Zebra's self-laminating direct-print laser wristbands feature the ability to print wristbands and labels on one sheet utilizing existing laser printers.

- Patented self-laminating seal protects the wristband from moisture and hand-sanitizers, preserving patient data for longer wristband usability.
- Ability to simultaneously print patient chart labels and the wristband on one sheet, streamlining patient admissions.
- Available with hole-punches for securement into patient charts.
- Adhesive-free zones around form edges and holes prevent printer jams and reduces costly printer maintenance.
- Enables quick deployment of a barcoded wristband solution without the need for a separate printer for wristbands.

## Features Include

Self-laminating design protects printed text and barcodes

Tamper-evident, adhesive closure

Wristband extender to fit a wide range of wrist sizes

Available in adult, pediatric and infant sizes, as well as a labor and delivery format

Latex-free

# SPECIFICATIONS AT A GLANCE\*

LaserBand 2 wristbands are available in a wide offering of configurations to fit the patient identification needs of virtually all hospitals.

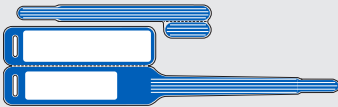
## ADULT WRISTBANDS

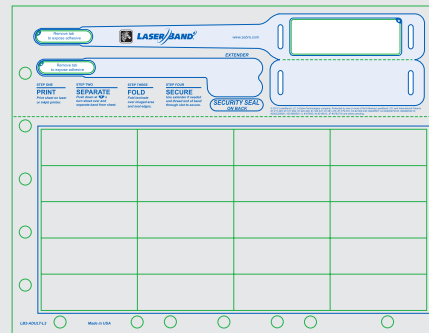
Sheets per Case: 1000

Adult Wristband Length: 8.25"

Adult Wristband Printable Area: 2.75 x 0.875"

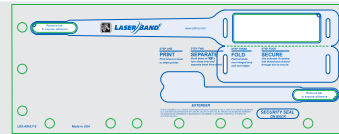
### ADULT WRISTBAND WITH 20 2.5 X 1" LABELS, 8.5 X 11" SHEET

COLOR	PART NUMBER
White	LB2-ADULT-L2
Blue	LB2-ADULT-L2-BLU
Yellow	LB2-ADULT-L2-YEL
Orange	LB2-ADULT-L2-ORA
Green	LB2-ADULT-L2-GRE
<b>LOCATION OF COLOR</b>	



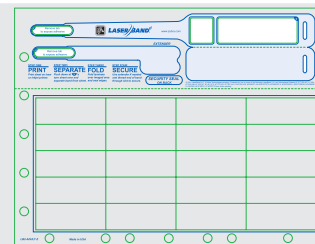
### ADULT WRISTBAND SHEETLET, WHITE, 4.25 X 11" SHEET

PART NUMBER
LB2-ADULT-S



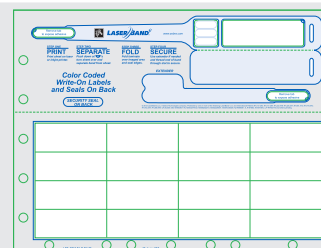
### ADULT ZONED WRISTBAND WITH 20 2.5 X 1" LABELS, WHITE, 8.5 X 11" SHEET, FEATURES AN ADDITIONAL 0.8125 X 0.875" PRINTABLE ZONE

PART NUMBER
LB2-ADULT-Z



### ADULT ALERT WRISTBAND WITH 16 2.5 X 1" LABELS, WHITE, 8.5 X 11" SHEET, FEATURES AN ADDITIONAL 0.8125 X 0.875" PRINTABLE ZONE FOR ALERT LABEL PLACEMENT

PART NUMBER
LB2-ADULT-LP-BLU



## PEDIATRIC WRISTBANDS

Sheets per Case: 1000

Pediatric Wristband Length: 7.125"

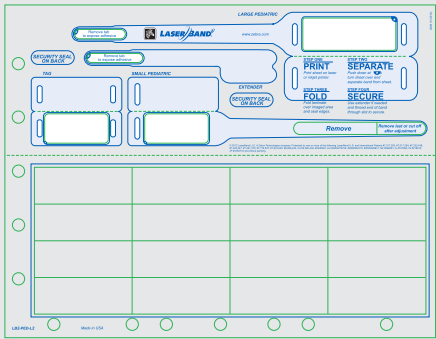
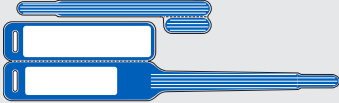
Pediatric Wristband Printable Area: 2.375 x 0.75"

Infant Wristband Length: 5.75"

Infant Wristband Printable Area: 1.625 x 0.75"

Tag Printable Area: 1.625 x 0.75"

1 PEDIATRIC AND INFANT WRISTBAND, 16 2.5 X 1" LABELS AND ID TAG, 8.5 X 11" SHEET

COLOR	PART NUMBER	
White	LB2-PED-L2	
Blue	LB2-PED-L2-BLU	
LOCATION OF COLOR		

## INFANT WRISTBANDS

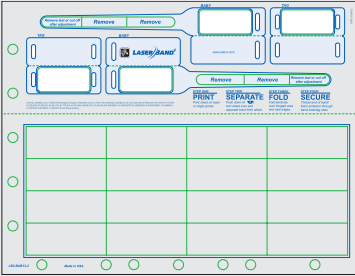
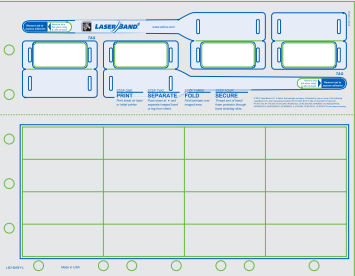
Sheets per Case: 1000 (unless noted)

Infant Wristband Length: 5.75"

Infant Wristband Printable Area: 1.625 x 0.75"

Tag Printable Area: 1.625 x 0.75"

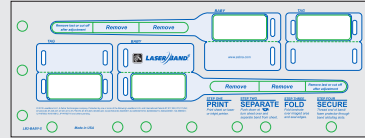
2 INFANT WRISTBANDS, 2 ID TAGS AND 16 2.5 X 1" LABELS, WHITE, 8.5 X 11" SHEET

WRISTBAND FORMAT	PART NUMBER	
Standard	LB2-BABY-L2	
Standard or Hang Tag	LB2-BABY-L	

**WRISTBAND SHEETLET WITH 2 INFANT WRISTBANDS AND 2 ID TAGS, WHITE, 4.25 X 11" SHEET**

**PART NUMBER**

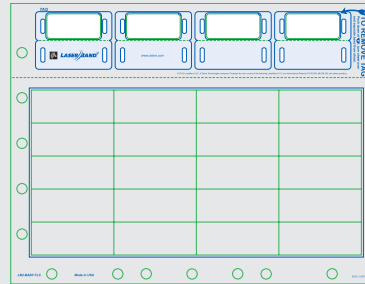
LB2-BABY-S



**4 ID TAGS AND 20 2.5 X 1" LABELS, WHITE, 8.5 X 11" SHEET, 500/CASE**

**PART NUMBER**

LB2-BABY-TLC

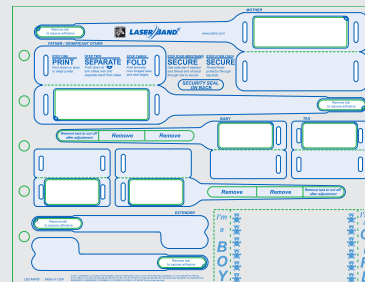


**LABOR & DELIVERY WRISTBANDS**

**2 ADULT WRISTBANDS, 2 INFANT WRISTBANDS, 2 ID TAGS AND A CRIB CARD, WHITE, 8.5 X 11" SHEET**

**PART NUMBER**

LB2-MFB



**Corporate Headquarters**  
+1 800 423 0442  
inquiry4@zebra.com

**Asia-Pacific Headquarters**  
+65 6858 0722  
apacchannelmarketing@zebra.com

**EMEA Headquarters**  
+44 (0)1628 556000  
mseurope@zebra.com

**Latin America Headquarters**  
+1 847 955 2283  
inquiry4@zebra.com

**Other Locations / USA:** California, Georgia, Illinois, Rhode Island, Texas, Wisconsin **Europe:** France, Germany, Italy, the Netherlands, Poland, Spain, Sweden, Turkey, United Kingdom **Asia Pacific:** Australia, China, Hong Kong, India, Indonesia, Japan, Malaysia, Philippines, Singapore, South Korea, Taiwan, Thailand, Vietnam **Latin America:** Argentina, Brazil, Colombia, Florida (LA Headquarters in USA), Mexico **Africa/Middle East:** Dubai, South Africa

\*Specifications subject to change without notice.  
©2013 ZIH Corp. All product names and numbers are Zebra trademarks, and Zebra and the Zebra head graphic are registered trademarks of ZIH Corp. All rights reserved. All other trademarks are the property of their respective owners.