

## MC-10 & MC-11

### Popular & Economical “MINI-CAT” Label Rewinders

The MINI-CAT (MC) Label Rewinders are the world's most popular low-price Label Rewinders. They are capable of rewinding label rolls up to 125mm wide (115 mm for MC-11), up to 220 mm in diameter at speeds up to 50 cm/sec. The MINI-CATs can also be used as Label Unwinders.



The **MC-10** has a 76 mm diameter vane style core holder. You can also use the included “coreless rewind” feature to rewind directly on-shaft.



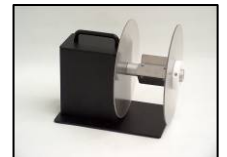
The **MC-11** includes a precision-crafted Adjustable Core Holder that adjusts in seconds to accept any core diameter from 25- to 101-mm.

Both MINI-CATs use LABELMATE's proprietary Constant Adjustable Torque™ (“CAT”) technology to achieve impressive, reliable performance at an unprecedented low price. A special motor, designed specifically for the MINI-CATs, offers bi-directional operation and trouble-free performance. A switch, on the power supply, conveniently controls the amount of rewind force. No awkward, troublesome belts or clutches are used and no speed adjustments are required. Your MINI-CAT automatically adjusts to any printer speed up to 50cm/sec and even allows label back-feeding automatically, if your printer requires it.



The MINI-CATs have an inner label flange to keep the edge of the label web aligned as the labels are being rewound. Also available is an optional Adjustable Paper Guide (**APG-MC**) that mounts directly to the **MC-10** or **MC-11** base plate and guides the outer edge of the labels. For the **MC-10**, an optional plastic Outer Flange (**2<sup>nd</sup> Flange MC-10**) is also available.

Rugged steel construction allows your MINI-CAT to simply be set in place near your label printer. Special anti-slip feet keep the unit from moving. Put a LABELMATE MINI-CAT to work for you today and enjoy a new dimension in label rewinding convenience and reliability. The MINI-CAT features a **5-Year Parts and Labour Limited Warranty**, the longest in the industry.



#### **MC-10 & MC-11 SPECIFICATIONS:**

**Label Width:** **MC-10** Up to 124 mm. **MC-11** Up to 115 mm.

**Maximum Label Roll Weight:** 5 Kg.

**Label Roll Diameter:** Up to 220 mm.

**Core Diameter:** **MC-10:** 76 mm or coreless (other diameter available on request). **MC-11:** Any from 25 to 101 mm.

**Speed:** Up to 50+ cm/sec. Switch adjustable rewind force. No speed adjustments are required.

**Start/Stop:** Convenient ON-OFF switch. **Direction:** Bi-directional.

**Power Requirements:** 220-240 vac 50Hz. UL / CSA Listed Power Supply. 120vac 60Hz. 20 va. units are available at the same price.

**Size:** H-W-D 229 x 152 x 279-mm. **Weight:** 5 kg.

**Optional:** Adjustable Paper Guide (**APG-MC**) Arm for either the MC-10 or MC-11. Plastic Outer Flange (**MC-10 2<sup>nd</sup> Flange**) for the MC-10 only.

Thousands of LABELMATE **MINI-CAT** Rewinders are in daily use around the world. Order yours today for new low-cost rewinding convenience!

Specifications subject to change without notice. DataMC  
EUR.doc Rev. 09/2012.

