



DATALOGIC RUGGED EXPERTISE MEETS ANDROID™... IN A FULL TOUCH 5" PDA!

The DL-Axist™ PDA combines the latest technologies and user friendly experience in a complete package. An appealing look and feel and a brilliant full touch 5 inch HD screen are combined with industrial robustness to survive indoor and outdoor usage. The DL-Axist PDA also has a protective rubber boot and Gorilla® Glass 3 screen to ensure ruggedness.

DATA CAPTURE

The DL-Axist PDA is equipped with an advanced 2D imager allowing quick and easy data capture from high density codes to the standard range distances, along with Datalogic's patented 'Green Spot' technology for good-read feedback. For applications requiring evidence of task execution or damaged documentation, a 5 MP Autofocus camera with a built-in LED flash provides easy documentation with photos.

Datalogic's SoftSpot™ technology is a user-definable 'floating soft trigger' to leverage the large touch display, allowing a new triggering experience for the user!

WIRELESS COMMUNICATIONS

The DL-Axist PDA leverages five embedded wireless technologies: Wi-Fi 802.11 a/b/g/n Cisco CCXv4 certified for quick network access and with superior MIMO technology (ensures higher throughput and better coverage), 3G/4G for real-time wide area voice and data coverage, Enterprise Class Assisted GPS (A-GPS) for location based applications, Bluetooth® wireless technology v4 for fast and low power consuming data connections and NFC for easy and intuitive configuration and pairing.

DATALOGIC 'RUGGED MOBILITY' WITH ANDROID

The DL-Axist PDA integrates an Android operating system (the leading OS for mobile devices) complimented by a suite of tools enabling Enterprise level security, fast deployment and easy management, thus helping to maximize the users' ROI.



FEATURES

- Ergonomic, compact and robust
- 5 inch HD multi-touch screen with Corning® Gorilla® Glass 3
- 802.11 a/b/g/n radio Cisco CCX v4 certified with MIMO technology for superior coverage
- 3G/4G cellular for voice and data communication
- Bluetooth wireless technology with BLE for beacons
- NFC for configuration and pairing
- Enterprise Class Assisted GPS for location-based applications
- 2D imager with Datalogic's patented 'Green Spot' technology for visible good-read feedback
- Datalogic's SoftSpot technology for innovative triggering through touch display
- Ruggedized with 1.8 m / 6.0 ft drop to concrete resistance with a rubber boot and IP67 sealing
- Audio jack for headsets or mobile POS solutions
- Device and browser lockdown pre-licensed
- EASEOFCARE Service Plans offer a wide range of service options to protect your investment, ensuring maximum productivity and ROI

INDUSTRY-APPLICATIONS

- **Retail:** Assisted Sales, Merchandising, Pricing, Stock Management, Inventory, Gift Registry, Mobile POS
- **T&L:** Route Accounting, Direct Store Delivery, Workforce Management, Courier Value-added Services
- **Manufacturing:** Electronics and Computers/Food and Beverage Merchandising, Field Sales and Management
- **Healthcare:** Bedside Care, Pharmacy, Inventory
- **Hospitality/Entertainment:** Cinemas, Theaters, Museums, Events, Travel, Leisure and Ticket Verification
- **Services:** Commercial Services, Library Management, Access Control

TECHNICAL SPECIFICATIONS

WIRELESS COMMUNICATIONS

LOCAL AREA NETWORK (WLAN)	T1 802.11 a/b/g/n Cisco CCX v4 certified; Supporting MIMO for higher throughput and coverage; Frequency range: Country dependent, typically 2.4 GHz and 5.2 GHz bands
PERSONAL AREA NETWORK (WPAN)	Bluetooth wireless technology v4.0 (IEEE 802.15)
WIDE AREA NETWORK (WWAN)	3G/4G (HSPA+): 850/900/1800/1900/2100 MHz for voice and data communication; SIM socket user accessible; Approved PTCRB: AT&T and T-Mobile in the U.S.
GLOBAL POSITION SYSTEM (GPS)	Integrated Assisted-GPS (A-GPS) with u-blox technology; Supported Types: GPS, GLONASS, Beidou; Time-To-First-Fix: Cold starts 26s; Aided starts 2s; Reacquisition 1.5s
NFC	Support for the following standards: ISO14443-4 (type-A, type-B); ISO15693; Mifare; Felica

DECODING CAPABILITY

1D / LINEAR CODES	Auto discriminates all standard 1D codes including GS1 DataBar™ linear codes.
2D CODES	Aztec Code, Data Matrix, MaxiCode, QR Code, UPU FICS, USPS Intelligent Mail
POSTAL CODES	Australian Post, Japan Post, KIX Code, PLANET, POSTNET, Royal Mail Code (RM4SCC)
STACKED CODES	Micro-PDF417, PDF417, GS1 DataBar Composites, GS1 DataBar Expanded Stacked, GS1 DataBar Stacked, GS1 DataBar Stacked Omnidirectional

ELECTRICAL

BATTERY	Removable battery pack with rechargeable Li-Ion batteries. Standard: 3.8 V; 3200 mAh (11.8 Watt-hours), ships with Wi-Fi models only; Extended: 3.8 V; 6400 mAh (23.6 Watt-hours); ships with WWAN Models
---------	---

ENVIRONMENTAL

DROP RESISTANCE	Withstands drops from 1.8 m / 6.0 ft onto concrete (with rubber boot); Withstands drops from 1.2 m / 4.0 ft onto plywood (without rubber boot)
PARTICULATE AND WATER SEALING TEMPERATURE	IP67 Operating: -20 to 50 °C / -4 to 122 °F Storage/Transport: -30 to 70 °C / -22 to 158 °F

INTERFACES

INTERFACES	Micro-USB connector: High Speed USB 2.0 Host and Client; Ethernet: via single dock, up to 1 Gbps
------------	--

PHYSICAL CHARACTERISTICS

DIMENSIONS	15.7 x 8.0 x 1.9 cm / 6.2 x 3.1 x 0.7 in
DISPLAY	5 inch TFT HD resolution 720 x 1280; LED backlight; Touch Screen: 5 points multi-touch capacitive panel with Corning Gorilla Glass 3; Gloves support
KEYS	Physical Keys: Home/Scan Key and 2 side scan keys; Power On/Off; Volume Up/Down; User programmable key; 3 user programmable virtual keys out of the display area
WEIGHT	With Standard Battery: 350.0 g / 12.3 oz With Hi-Capacity Battery: 400.0 g / 14.1 oz
AUDIO	Standard 3.5 mm audio jack, suitable for headsets or mobile POS attachables

READING PERFORMANCE

CAMERA	Resolution: 5 megapixel; Illumination: User controllable LED flash; Lens: Auto focus
SCAN ENGINE	2D Area Imager (supports 1D and 2D codes); Datalogic's 'Green Spot' for good-read feedback; Depth of Field: 8.5 to 50 cm / 3.3 to 19.7 in depending on bar code density and type; Resolution: WVGA (752 x 480 pixels); Illumination: White LEDs; Aiming: 650nm VLD; Field of View: 40°H x 26°V
PRINT CONTRAST (MINIMUM)	25%
MINIMUM ELEMENT WIDTH	1D Linear: 0.0762 mm / 3 mils PDF: 0.127 mm / 5 mils Data Matrix: 0.195 mm / 7.5 mils

SAFETY & REGULATORY

AGENCY APPROVALS	The product meets necessary safety and regulatory approvals for its intended use.
ENVIRONMENTAL COMPLIANCE	Complies to EU RoHS
2D IMAGER	Aiming System (laser): EN/IEC 60825-1:2007 (Class 2); 21 CFR 1040 (CDRH) (Class 2) Illumination System (white LEDs): IEC 62471 Exempt risk group

SOFTWARE

APPLICATIONS	Datalogic's SoftSpot technology for configurable soft triggers; Supports Datalogic's Queue Busting app; Pre-licensed device and browser lockdown powered by 42Gears; Enterprise class PTT offered by Zello
CONFIGURATION AND MAINTENANCE	Datalogic DXU for device configuration and firmware upgrade from PC; NFC Tap to Configure; NFC Tap to Pair (for other Bluetooth® devices)
DEVELOPMENT	Datalogic SDK™ with Android

SYSTEM

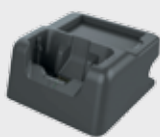
EMBEDDED SENSORS	Accelerometer; Gyroscope; Ambient light; Proximity
EXPANSION SLOTS	Micro-SD card slot: Compatible with Micro SD-HC cards; Data transfer up to 48 Mbps; User-accessible
MEMORY	System RAM: 1 GB; eMMC Flash: 8 GB
MICROPROCESSOR	OMAP 4430 @ 1 GHz Dual Core
OPERATING SYSTEM	Android v4.4.4
REAL-TIME CLOCK	Time and date stamping under software control

WARRANTY

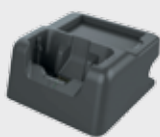
WARRANTY	1-Year Factory Warranty
----------	-------------------------

ACCESSORIES

Base Stations/Chargers



• 94A150071
Single Slot Dock (SSD) USB



• 94A150072 Single Slot Dock (SSD) Ethernet



• 94A150074
4-Slot Battery Charger

Miscellaneous



• 94ACC0132
Rubber Boot



• 94ACC0133
Hand Strap
(Included with purchase)



• 94ACC0127 Bluetooth
Headset VX1 B350-XT